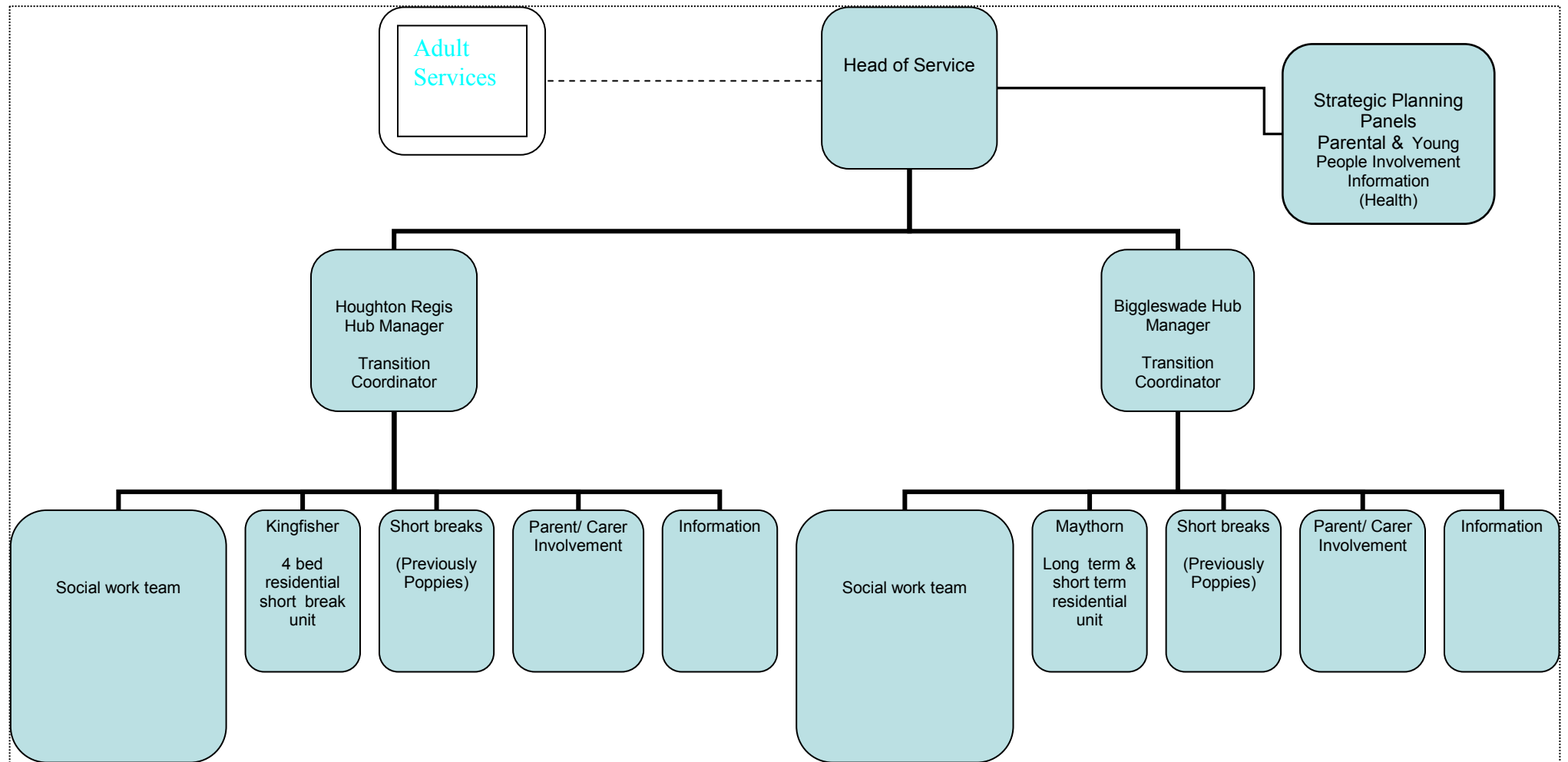


Proposed Configuration of Disabled Children's Services (Social Care Structure Chart) Appendix C2



Role of Hub Manager

- Manage disabled children's social care service
- Ensure designated members of social care team have formal links with Education, Child Development Centres, CAHMS, Adult Services and Vol Sector.
- Co-ordination of Hub activities and resources

Role of Head of Service

- Manage the delivery of all social care services across the 2 Hubs
- Responsibility for maintaining strategic links with Education, Health, Adult services and Vol Sector
- Ensure delivery of single assessment single plan in partnership with other senior managers